

February 2007

Volume 6 Issue 6

THE LION'S ROAR

ST. MARK'S EPISCOPAL CHURCH



Human Free Will: Basic Truth or Convenient Illusion

Do you actively choose virtue over evil (at least on a good day), or are you at the whim of your DNA and its unfolding code? Can President Bush change course on Iraq, can St. Mark's choose a new vocational direction, can we say No to chocolate mousse or alcohol? Are we in charge of our lives, or do we bounce like ping pong balls from one A.D.D. moment to the next? Where, if anywhere, does God's hand intervene?

These questions have vexed philosophers, theologians and everyday people for centuries. Now, emerging brain research promises (or threatens) new insights regarding human behavior and free will. I wonder about this tension both on my good and bad days as your priest, and a debate within Christianity has simmered for centuries. Where do you stand?

A recent New York Times article ("Free Will: Now You Have It, Now You Don't," 1/2/07) interviewed scientists about this debate. At one extreme, a science philosopher writes, "If people freak at evolution, etc., how much more will they freak if scientists and philosophers tell them they are nothing more than sophisticated meat machines?" Certainly, our Sunday liturgy promises that we are more than meat machines, but I wonder if we agree on what forces drive us to holiness or ruin.

For five Sundays (February 4 - March 4), I invite you to engage this topic at 9:00 a.m. in our Education Center. I'll tee up core parts of our faith tradition, add some Freud and cognitive behavioral research and ask whether human free will lies at the core of our identity or serves as a soothing illusion. Specifically, we will address five themes:

1. Is Christian tradition optimistic or pessimistic regarding human free choice?
2. The Christian debate: Augustine v Pelagius and Calvin v Arminius
3. Freud on our (in)capacity to love, work and let go of our god projections
4. Brain research on human desire, addiction, altruism and freedom
5. Vocation and transformation: do I choose God or does God choose me?

(continued on page 2)

Inside this issue:

Women's Retreat	2
Annual Meeting Election	3
Lion's Den Coffee House	4
Circle of Concern	5
Book Group	5
Book Group Selections	5
Adult Ed & Lenten Programs	6,7
Baptism Dates	8
Food Pantry Needs	8
Parish Register	8
Newcomer Photos	9
Earth Ministries	10
Stewardship	10
Calendar	11
Mardi Gras Pancake Supper	12

Spiritual Intimacy at St. Mark's

Lenten Bible Study with Mother Davis

Our Roadmap discussions over the past year revealed a desire, a need for greater "spiritual intimacy" at St. Mark's. One way to facilitate that is through small groups that covenant to meet together for a fixed period of time around a specific theme. Lent is an ideal time to enter into such a communal journey.

(continued on page 4)

Women's Retreat – An Intro to Mary Magdalene

In Luke's Gospel passage for the Fifth Sunday after the Epiphany, Jesus invites Simon, owner of one of the fishing boats at the shore of the lake, to "Put out into the deep water and let down your nets for a catch." (Luke 5:4). Given the pace of life in our zip code, we so rarely have the opportunity – we certainly rarely make the opportunity for ourselves – to "put out into the deep water." As the fishermen that day in the Gospel discovered – the catch in the deep water is of an entirely different magnitude than what they catch in the shallower water near the shore.

It is with the hope of facilitating an experience into deeper water than we can usually access in the weekly rhythm of life here at St. Mark's that I am leading an overnight Women's Retreat for women at Wisdom House in Litchfield, CT from 4 p.m. on Friday, March 30 to 4 p.m. on Saturday, March 31, 2007.

The date was chosen to be an opening to a deeper walk through Holy Week, which begins with Palm Sunday, April 1st, right after we return. Just carving out a 24 hour period for yourself to intentionally focus on your spiritual journey in the context of a community of women would be a great gift to yourself. For those who have never been on a retreat, the experience of stepping out of our daily routines and demands is extraordinary.

The retreat will incorporate the rhythms of the daily office, a celebration of Holy Eucharist in the style of the early Christian communities, and an experience of Magdalene spirituality, arising from a close study of Mary Magdalene, perhaps the most misunderstood character in all of scripture.

The cost for the retreat is \$90 per person, which covers shared accommodations and three meals (dinner on Friday, breakfast and lunch on Saturday). We have guaranteed 15 spots, which will be allocated on a first come- first served basis; so if you want to be part of this retreat, please call the office to reserve a spot and send in or drop off your check, made out to St. Mark's, with "Women's Retreat" in the memo line. To check out the facility, go to www.wisdomhouse.org. Any questions, contact Mother Davis, 966-4515 x102 or vdavis@stmarksnewcanaan.org.

Human Free Will

Sunday Morning Adult Ed

(continued from front page)

Depending upon whether you are a child of the Reformation or Enlightenment, you may embody an initial bias. I hope to stretch (maybe even scramble) your assumptions as we argue both sides of the debate. The outcome may shed some light on the direction of your life, not to mention that of the parish we love. Join us for spiritual calisthenics and engaging conversation, starting this Sunday.

DMR

(For the full text of the article by Dennis Overbye log on to:

<http://www.stmarksnewcanaan.org/newsindex.asp>)

Rector Search Committee

The search committee continues to meet on a regular basis. For frequent updates on committee work, visit the Rector Search tab on the website:

<http://www.stmarksnewcanaan.org/rectorsearch.asp>.

The committee welcomes questions, comments, suggestions, and names of clergy candidates.

Emails should be directed to:

RectorSearch@stmarksnewcanaan.org.

Written messages should be directed to:

The Rector Search Committee
St. Mark's Episcopal Church
111 Oenoke Ridge
New Canaan, CT 06840



† † † † † †

Ash Wednesday Services

HOLY EUCHARIST AND IMPOSITION OF ASHES

WEDNESDAY, FEBRUARY 21 AT 9:30 AM AND 7:30 PM

† † † † † †



St. Mark's 243rd Annual Parish Meeting*Sunday, February 11, 2007**11:30-1:00 in Morrill Hall*

At our Annual Meeting, we elect vestry officers and members, along with delegates to diocesan convention and deanery meetings. We also elect a nominating committee for future parish elections. Our parish bylaws call for contested elections. The candidates standing for election are listed below. We do not allow for absentee votes, so those eligible to vote must be present to cast a vote. If you have a question about your voting eligibility, refer to the by-laws on the website (under the vestry tab on the welcome page) or posted outside the music room or in the church office. Bios and photos for all candidates are found on the website under the What's New tab or hardcopies

For those interested in further discussion after the Annual Meeting, we will meet in the library from 1:00 - 2:30. Childcare and light refreshments will be available until 1:00 in the library.

243RD ANNUAL PARISH MEETING

February 11, 2007

11:30-1:00 p.m. Morrill Hall

SLATE OF CANDIDATES

OFFICERS (For one year terms):

Senior Warden:	Katie Roach
Junior Warden:	Stephen Wyckoff
Treasurer:	Chris Gruseke
Clerk:	Ditte Reifsnnyder

VESTRY: (elect 4)

Member:	Maggie Downes-Angus
Member:	Jill Ernst
Member:	Jon Fleming
Member:	Brian Hollstein
Member:	John Layng
Member:	David Shea
Member:	Diana Smith
Member:	Kathy Stolar

NOMINATING COMMITTEE (For two year terms): (elect 3)

Member:	Lia DeNey
Member:	Jennifer Donovan
Member:	Alison Gruseke
Member:	Bill Landis
Member:	Jim Lisher
Member:	Margot Thorsheim

SUBSTITUTE DELEGATES TO DIOCESAN CONVENTION AND MID-FAIRFIELD DEANERY (For one year term):

Representative:	Jeremy Reifsnnyder
Representative:	Sara Smith

Lectio Divina Bible Study

(continued from front page)

I am planning a Wednesday evening covenant group bible study, 7:30 to 8:30 p.m. during Lent. We will gather in the chapel at 7:30 for Evening Prayer together with the 8th grade confirmation class. (This would be an ideal class for those who are bringing their children to confirmation class to deepen their own spiritual walk/intimacy at St. Mark's.) The 8th graders will then go on to their classroom, and we will stay in the chapel for a meditative, *lectio divina* – type bible study, focusing on the daily scriptures used in the service of Evening Prayer. As this type of bible study gets more comfortable with practice and with trust in the group, it will be to everyone's benefit if people who participate are willing to "covenant" to come to all the sessions.

There will be five meetings altogether, February 28, March 7 – [No class on March 14, school vacation week] – March 21, March 28, and April 4. Richard J. Foster, in his book, *Prayer: Finding the Heart's True Home* describes *lectio divina* as follows:

"This is a kind of reading in which the mind descends into the heart, and both are drawn into the love and goodness of God. Henri Nouwen once pointed to a lovely picture hanging in his apartment and said to me, 'That is *lectio divina*.' It depicted a woman with an open Bible in her lap, but her eyes were lifted upward. . . We are doing more than reading words; we are seeking 'the Word exposed in the words,' to use the phrase of Karl Barth. We are listening with the heart to the Holy within. This prayerful reading, as we might call it, edifies us and strengthens us."

Please e-mail (vdavis@stmarksnewcanan.org) or call (966-4515 x102) Mother Davis if you are interested in committing to this small group Lenten bible study.



The Lion's Den Book and Gift Store

Wednesday
Morning
Coffee House

Pull up a chair, browse a book, pour some java, grab a pastry from 9 to noon on Wednesdays at the Lion's Den. From

February 21 through June, the Lion's Den invites you to stop to see what it's all about.



Valentine's Day gifts and books are featured, look for lenten readings, and spring and Easter wares are starting to fill the shelves.

Tickets for the Chanticleer concert (Monday, March 26) are available at the Lion's Den.

The Lion's Den winter hours are:

Wednesday, Thursday, Friday, Sunday: 9:00 – 1:00 p.m.
Saturday: 10:00 – Noon

Store is open during special events, watch for details.

INCLEMENT WEATHER

In the event of severe or dangerous weather conditions or if you are just not sure whether we are having a program, please check either our phone message or our website – under on the "Calendar" (click on the specific day). Children's choirs are canceled if the New Canaan schools close for inclement weather.

In line with that, chairs or committee leaders, if you would like to post a message to your group about a meeting – change or cancellation - contact either Thea or Rhonda and it will be posted on the website calendar. Please do not call the emergency pastoral care line for this information.



Circle of Concern

There is a very faithful group of about a dozen women who have been diligently working to stay in touch with those in the parish who are ill or no longer able to get to church. This group has been going by the name "Pastoral Care Committee" – a name we have decided is a deterrent to those who might otherwise consider getting involved in this important work – part of fostering that spiritual intimacy our Road Map revealed was missing and desirable here at the parish. The group doesn't give "pastoral care" in the sense that the clergy provide pastoral care to parishioners. Rather, this group maintains relationships, bonds formed in the circle of the parish community.

Part of the work has been sponsoring intergenerational bonds and to bring such as the spring women's luncheon, visible things. Beyond that, however, Christmas angels at Christmas time, once a month – small gestures that let community they loved and participated



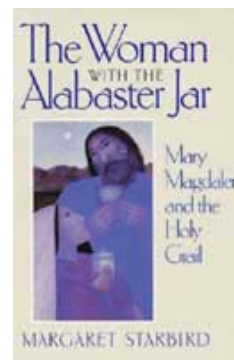
events at the church during the year, to foster those who are able to come to participate – events the All Saints' birthday party, a fall tea. Those are this group makes phone calls to folks, delivers writes notes occasionally, delivers altar flowers people know they are not forgotten by the church in for years.

This ministry is actually a wonderful way to be Christ's hands and heart on your own time and schedule. Making a phone call, or a monthly visit, or writing a note to someone who will be VERY happy you did can be very rewarding all the way around. Please prayerfully consider getting involved in a personal way with those in our parish family who cannot reach out in the way they once could – and contact Mother Davis. This network is definitely one that needs to grow, encompassing all ages and both genders.

Book Group: Note Date Change

Tuesday, February 20 - 12:30 – 2 p.m.

Continuing our journey with Mary Magdalen, we will be discussing *The Woman with the Alabaster Jar: Mary Magdalen and the Holy Grail* by Margaret Starbird. The book was published in 1993 (prior to – and influencing – Dan Brown's *Da Vinci Code*), presenting the Roman Catholic author/scholar's evidence for making the case that Mary Magdalen was in fact the bride of Jesus. A fascinating look at the bible and history, symbols and mythology, that encourages looking at the story with new eyes, taking in "the forgotten feminine." The book cries out for a field trip to Provence! All are welcome with no need to have read January's book on Mary Magdalen.



Each month's reading selection is available in the Lion's Den Bookstore. Any questions, call Mother Davis, 966-4515 x102. Please join us!

February 20, 2007:	<i>The Woman with the Alabaster Jar</i> by Margaret Starbird
March 21, 2007:	<i>The Mighty and the Almighty</i> by Madeleine Albright
April 18, 2007:	<i>Robinson Crusoe</i> by Daniel Defoe
May 16, 2007:	<i>The Year of Magical Thinking</i> by Joan Didion

Winter/Spring Adult Education Classes and Lenten Programs

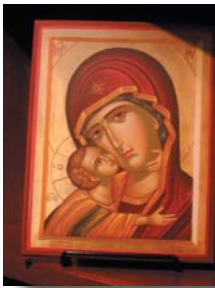
One of the repeated desires we hear at St. Mark's is the desire for small groups who can be in real relation to one another in their faith lives. This Lent, there are a number of ways to experience committed small group communities. We hope you'll take part!

Sunday Mornings from 9:00-9:45

Human Free Will – Basic Truth or Convenient Illusion

David Rider for 5 Sundays: February 4 – March 4 in the Education Center

Help us explore this classic debate in Christian theology, now enriched by modern psychology, natural and social science.



Icons and Prayer

Mother Davis and Rita Powell for 6 Sundays: February 25 - April 1 in the Outreach Center

Mother Davis and Rita Powell team-teach a course on icons, sacred art in the Christian tradition. The use of icons has grown in the Episcopal Church over the past few generations as we have learned more about the tradition from our Eastern Orthodox brothers and sisters.

For Newcomers Only

David Rider for 2 Sundays: March 25 and April 1

If you are new to St. Mark's or the Episcopal Church, join us for two Sunday mornings to learn more about us. Come with questions, dreams, thoughts and see how you and your family can grow in this spiritual community.

Wednesday Morning Bible Study from 10:00-11:00

Jesus in the Church's Tradition and Witness

David Rider and Rita Powell

Explore evolving witness to Jesus over centuries from post-biblical through nineteenth century; study ways that external events impact theological witness and vice versa; probe expansion and contraction of theological diversity and orthodoxy; examine Christian writers with similar and dissimilar perspectives from our own today.

Daily Office

A hidden gem of our tradition, the Book of Common Prayer services of morning and evening prayer give us a daily opportunity to hear scripture and pray together during the season of Lent. Led by parishioners, we will offer the service of Morning Prayer on Monday, Tuesday, Thursday, and Friday, at 7:00 AM, starting the Thursday after Ash Wednesday, February 22 (Wednesday morning we will have Morning Prayer plus Eucharist at 9:30). Evening prayer will be said Wednesday evenings in the chapel at 7:30 PM with the confirmation classes and the Wednesday night Covenant Group (see next page). Sunday, March 4, our choir will lead us in a service of evensong, to experience the festival quality of the Daily Office. Come as often as you can!



Yoga

Starts February 25 in the library

Another form of small group fellowship will be two yoga series offered during Lent with Rita Powell. Tuesday mornings, 10:15-11:15, and Sunday afternoons, 5:00-5:45, classes in Lent will have an emphasis on prayer and meditation. Come to any of these classes as your schedule permits. Paul's metaphor of each of our places in the life of the Body of Christ is encouragement to explore what we can learn from our own physicality.



Covenant groups

Wednesday evenings - 7:30 p.m. and Saturday mornings, time to be determined

There are two covenant groups forming for Lent. One will be a men's group, and one will be open to all. For these groups to become real places of study and prayer and fellowship, we will ask members to commit to one another for all five weeks (excluding the school vacation week) of Lent. Both groups will focus on personal relationship to scripture passages, and themes of faith that matter in our lives. RSVP to Vicki Davis for the group meeting Wednesday evenings, and to Jim Hilboldt for the men's group meeting Saturday morning.

Special Events



In addition to the small group opportunities in Lent, we will have a few special events to honor the season.

Mardi Gras Pancake Supper

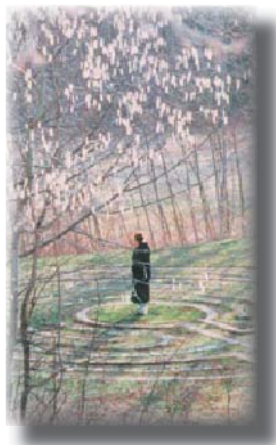
Tuesday, February 20, 6:30-8PM in Morrill Hall. Sponsored by the EYC and their families.

Lenten Choral Evensong

Sunday, March 4 at 6:00 PM. The choir will lead a meditative service of choral evensong.



Ukrainian Egg Decorating



Sunday, March 25 at 11:45AM. Led by our own Nadia Cwiach. RSVP so we can make sure we have a decorating kit for you. (Space is limited, so sign up early!)

Women's Retreat

Friday, March 30 at 4 p.m. through Saturday, March 31, 4 PM at Wisdom House in Litchfield, CT. Led by Vicki Davis, this will be a wonderful chance for women of the parish to spend time together in prayer and conversation as we prepare for Holy Week. (Space is limited, so sign up early!)

Dear St. Mark's Parish,

The Goodman family would like to thank everyone for the well wishes and prayers you have offered over the past year. Knowing that so many people were holding our son, Jack in their hearts and prayers every Sunday provided a wonderful sense of support.

With deepest appreciation,
The Goodman Family

**PARISH REGISTER
JANUARY 2007**

BAPTISMS

Nicholas Robert Caldarone
son of Carrie Louise Bouton Caldarone and Marc Alan Caldarone

Katherine Mary Sullivan and Jennifer Erin Sullivan
*twin daughters of Amy Jo Annunziato Sullivan and
Christopher Andrew Sullivan*

Austin Charles Walt
Jennifer Ann Casidas and Darin Ray Walt

The Food Pantry of New Canaan

Grocery and Supplies Wish List

Our inventory is low, please help replenish our shelves with the following:

<i>Pasta sauce</i>	<i>Canned fruits and vegetables</i>
<i>Bottled juice</i>	<i>Juice boxes</i>
<i>Rice</i>	<i>Dried fruit</i>
<i>Baking mixes</i>	<i>Pancake mix and syrup</i>
<i>Coffee: drip and instant/regular & decaf</i>	<i>Instant soups</i>
<i>Children's lunch snacks</i>	<i>Laundry and dish detergent</i>

All non-expired donations can be dropped off in the foyer of the St. Mark's office building anytime! Financial donations payable to St. Mark's Church or grocery giftcards may be sent to the church.



Upcoming Baptism Dates:

†	Easter Vigil	Saturday, April 7, 2007	8:00 p.m.
†	Pentecost	Sunday, May 27, 2007	10:00 a.m.
†	All Saints' Sunday	November 4, 2007	10:00 a.m.

At St. Mark's, we celebrate Baptism on the feast days listed above. For information, please call the church office and if you want to schedule a baptism be sure to call several weeks before the desired date.

Mrs. Palmesi's Rules

Parenting Workshop

February 25, 11:15-12:45 in the Library

St. Mark's is proud to present St. Mark's Nursery School Director, Helen Palmesi and her time honored rules for parenting in these challenging times and demographic area. With her more than 41 years of experience in early childhood development, "Mrs. Palmesi's Rules" will guide parents in raising well-balanced children – we know it doesn't end with the toddler years.

Helen has a Bachelor of Science Degree in Child Development and Family Relations from the University of Connecticut and did graduate work in education at the University of Maryland and Wheelock College.

Families, friends, grandparents, caregivers are invited; childcare and light refreshments will be provided.

Some New Faces at St. Mark's



Laura and Stuart Parker



George and Selma Triant



Rick and Jennifer Pivrotto



John and Brenda Mahoney



Cindy and Christian Stewart



Maria and Edward See

Earth Ministries

At last, winter is here. Getting through New Year's without needing a winter coat may have been pleasant, but it is also a warning, an inconvenient truth, as Al Gore puts it. We are all in this together; each responsible for our share of pollution and reducing it. You do not have to ask, "What can I do?" - there are answers everywhere we turn. Even our CL&P bill offers several suggestions, inserting a page from their Smart Balance catalogue.



For a good green resource, eco-conscious author, David Gershon, after seeing *An Inconvenient Truth* wrote a small book called: *Low Carbon Diet: A 30 Day Program to Lose 5000 Pounds*. It is a step-by-step program, written in Weight Watcher's style and a serious attempt at changing American's energy consumption habits. Look for it this spring, the Lion's Den bookstore will have it on the shelves next month.



2007 Stewardship Campaign Not Over Yet!

STEWARDSHIP EVERY MEMBER CANVASS...reports that 252 households have pledged \$943,433 toward our \$1.2 million budget. (In 2006, a total of 290 households pledged \$973,890.) If you have not pledged, please give prayerful consideration and submit your 2007 pledge card in the offering plate today, mail/deliver it to the parish office, or email it to financial secretary Nadia Cwiach at ncwiach@stmarksnewcanaan.org.

Thank you to 11 households who have responded to our January discussions with revised pledges totaling \$29,160.

Save the Dates

Chanticleer Concert
Monday, March 26 at 8pm
Tickets \$40 at the Lion's Den or Gramophone

Young Families Party
Saturday, April 21
From 7-9pm
Watch for Details

Ladies Spring Luncheon
Wednesday, April 25
St. Mark's Day
Morrill Hall

Altar Flowers








Please support this season's glorious music and stunning altar flowers and plants with a donation in memorial or in honor of loved ones. Call the church office (203.966.4515) or email Thea (tmcgee@stmarksnewcanaan.org) to place your request and your dedication. Dedications must be placed by April 3 to be included in the Easter bulletins.



St. Mark's Episcopal Church
 New Canaan, CT 06840
 www.stmarksnewcanaan.org

February 2007



Sunday	Monday	Tuesday	Wednesday	Thursday	Friday	Saturday
<p>Morning Prayer</p> <p>7:00 a.m. during Lent Monday-Friday</p>				<p>1</p> <p>9-1p Book Store 7:00p NC CaTS (St. M) 7:30p Adult Choir</p>	<p>2</p> <p>9-1p Book Store 10a Senior Men's Group</p>	<p>3</p> <p>10-12p Book Store 4:00-5:15p Parish Choir</p>
<p>4 Boy Scout Sunday</p> <p>8:00a HE I 9-1p Book Store 9:00a Adult Ed 10:00a HE II/Children's Ed/Worship 11:15 Coffee Hour 6:00p HE w/Taize 7:00p EYC</p>	<p>5</p> <p>12:00p ACOA/Alanon 1:00p Staff Meeting</p>	<p>6</p> <p>9:00a Food Bank 10a AA 12p Alanon 4:00-4:30p Cherub & Joyful Noyze Choir</p>	<p>7</p> <p>9-1p Book Store 9:30a Eucharist & Healing 10a Adult Ed Class 10a AA Meeting 4-5:00p Choristers 6-7:00p Youth Choir 7:30p Confirmation</p>	<p>8</p> <p>9-1p Book Store 6:15 Food Bank 7:30p Adult Choir</p>	<p>9</p> <p>9-1p Book Store 10a Senior Men's Group</p>	<p>10</p> <p>10-12p Book Store 4:00-5:15p Parish Choir</p>
<p>11 Annual Meeting</p> <p>8:00a HE I 9-1p Book Store 9:00a Adult Ed. 10:00a HE II/Children's Ed/Worship 11:15 Coffee Hour 11:30 Annual Mtg 1:00p Additional Discussion 6:00p HE w/Taize 7:00p EYC</p>	<p>12</p> <p>12:00p ACOA/Alanon 1:00p Staff Meeting</p> <p>243rd Annual Meeting</p>  <p>Sunday, 2/11</p>	<p>13</p> <p>10a AA 12p Alanon 4:00-4:30p Cherub & Joyful Noyze Choir 8:00p Outreach Commission</p>	<p>14</p>  <p>9-1p Book Store 9:30a Eucharist & Healing 10a Adult Ed Class 10a AA Meeting 4-5:00p Choristers 6-7:00p Youth Choir 7:30p Confirmation</p>	<p>15</p> <p>9-1p Book Store 7:00p NC CaTS (FPNC) 7:30p Adult Choir</p>	<p>16</p> <p>9-1p Book Store 10a Senior Men's Group</p>	<p>17</p> <p>10-12p Book Store 4:00-5:15p Parish Choir</p>
<p>18</p> <p>8:00a HE I 9-1p Book Store 9:00a Adult Ed. 10:00a HE II/No Children's Ed/Worship 11:15 Coffee Hour 6:00p HE w/Taize 7:00p EYC</p>	<p>19 President's Day Office Closed</p> <p>12:00p ACOA/Alanon</p> 	<p>20</p> <p>9:00a Food Bank 10a AA 12p Alanon 12:30 Bookgroup (change of date) 4:00-4:30p Cherub & Joyful Noyze Choir 6:30-8p Mardi Gras Pancake Supper</p>	<p>21</p>  <p>Lent Begins</p> <p>9-1p Book Store 9:30a Eucharist & Healing w/Imposition of Ashes 10a Adult Ed Class 10a AA Meeting 4-5:00p Choristers 6-7:00p Youth Choir 7:30 HE w/Imposition of Ashes</p>	<p>22</p> <p>7:00a Morning Prayer—Chapel 9-1p Book Store 6:15 Food Bank</p>	<p>23</p> <p>7:00a Morning Prayer—Chapel 9-1p Book Store 10a Senior Men's Group</p>	<p>24</p> <p>9-3 Vestry Retreat 10-12p Book Store 4:00-5:15p Parish Choir</p>  <p>Vestry Retreat 9-3pm</p>
<p>25 Lent I</p> <p>8:00a HE I 9-1p Book Store 9:00a Adult Ed 10:00a HE II/Children's Ed/Worship 11:15 Coffee Hour 11:15 Parenting Discussion 5:00-5:45 Yoga 6:00p HE w/Taize 7:00p EYC</p>	<p>26</p> <p>7:00a Morning Prayer—Chapel 12:00p ACOA/Alanon 1:00p Staff Meeting</p>  <p>Sundays & Tuesdays</p>	<p>27</p> <p>7:00a Morning Prayer—Chapel 10a AA 10:15-11:15Yoga 12p Alanon 4:00-4:30p Cherub & Joyful Noyze Choir 7:30 Vestry Meeting</p>	<p>28</p> <p>9-1p Book Store 9:30a Morning Prayer /Eucharist & Healing 10a Adult Ed Class 4-5:00p Choristers 6-7:00p Youth Choir 7:30p Evening Prayer & Bible Study 7:30p Confirmation</p>	<p>March 1</p> <p>7:00a Morning Prayer—Chapel 9-1p Book Store 7:30p Adult Choir</p>	 <p>Mardi Gras Pancake Supper Feb. 20 6:30-8:00pm</p>	

SHROVE TUESDAY PANCAKE SUPPER

FEBRUARY 20 ~ 6:30-8:00

One last indulgence before Lent.
Flapjacks and all the fixings hot off the
griddle are on the menu.

Crafts for the kids, and beads galore.

Hosted & flipped by our very own EYC



Weekly Service Times

Sunday	8:00 a.m.	Rite I Holy Eucharist
	10:00 a.m.	Rite II Choral Holy Eucharist
	10:00 a.m.	Children's Eucharist
	6:00 p.m.	Holy Eucharist II with Taize Music
Wednesday	9:30 a.m.	Holy Eucharist II with Healing

The Rev. David Rider
Interim Rector

The Rev. Vicki M. Davis
Curate

Rita Powell
Director of Youth and Family
Ministry

Brian-Paul Thomas
Organist and Choirmaster

Richard DePatie
Parish Administrator

Rhonda Morrill
Director of Christian
Education

Helen Palmesi
Nursery School Director

Melanie Mandler
Bookstore Manager

Nadia Cwiach
Financial Secretary

Thea McGee
Parish Secretary

The
Lion's
Roar



St. Mark's Episcopal Church

111 Oenoke Ridge Road
New Canaan, CT 06840
203.966.4515
203.966.0439 (fax)
203.972.7888 (nursery school)
203.966.3838 (bookstore)
www.stmarksnewcanaan.org

Non-Profit Org.
U.S. Postage
PAID
New Canaan, Ct.
PERMIT No. 70